

# CAT® MINI EXCAVATOR ATTACHMENT OPTIONS

» Get Multiple Machines Out of One

For more information,  
visit [Cat.com/attachments](https://www.cat.com/attachments)  
or contact your local  
Cat dealer.



**BUILT FOR IT.™**

AEXQ1584-02 March 2018

© 2018 Caterpillar. All Rights Reserved. CAT, CATERPILLAR, BUILT FOR IT, their respective logos, "Caterpillar Yellow," the "Power Edge" trade dress, as well as corporate and product identity used herein, are trademarks of Caterpillar and may not be used without permission.

**BUILT FOR IT.™**



# DO MORE WITH ONE MACHINE.

Invest in what you already own — give your machine Cat® attachments and equip it to do more. And because our attachments are engineered, balanced and tested to each Cat model, they promise to minimize stress and optimize performance. Browse our lineup and find the tools to make your work easier.



# AUGERS



## Bore with better efficiency.

Our augers offer different speed and torque options for work in a variety of soils. We've engineered their speed to extract soil efficiently and their torque to prevent stalling in dense ground. Select from a range of auger bits. See page 12 for details.

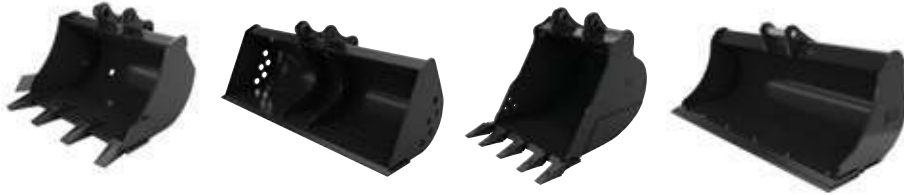
### Specifications

Attachment Models	Machine Models	Drive Shaft Torque @ Max Pressure		Drive Method
		Nm	(lb ft)	
A7B	301.4C-302.7D CR	1105	(815)	Direct Drive
A14B	302.2D-304E2	2304	(1700)	Direct Drive
A19B	303E CR-305.5E2 CR	4118	(3037)	Single Planetary
A26B	305E2 CR-308E2 CR SB	6826	(5034)	Double Planetary

Mini Excavators						
301.4C	301.7D CR	302.4D	303E CR	304E2 CR	305.5E2 CR	308E2 CR SB
301.7D	302.2D	302.7D CR	303.5E2 CR	305E2 CR	307E2	

# BUCKETS



## Move more material in less time.

The shape of our buckets improves digging, loading and material retention. Compared to most competition, we have more capacity per every inch of width. And each is made of high-strength, tempered steel. Select from a range of bucket teeth.

### Specifications

Attachment Models	Machine Models	Width Range		Capacity Range	
		mm	(in)	m <sup>3</sup>	(yd <sup>3</sup> )
Digging	300.9D-302.7D CR	230-700	(9-28)	0.014-0.111	(0.018-0.145)
Ditch Cleaning	all below	700-1600	(28-63)	0.027-0.421	(0.035-0.55)
Tilting Ditch Cleaning	301.4C-305.5E2 CR	1000-1600	(40-63)	0.055-0.28	(0.071-0.366)
Heavy Duty	303E CR-308E2 CR SB	300-914	(12-36)	0.05-0.39	(0.065-0.51)
Heavy Duty Capacity	305E2 CR, 305.5E2 CR	300-915	(12-36)	0.082-0.300	(0.107-0.392)
Heavy Duty Rock	307E2, 308E2 CR SB	610-762	(24-30)	0.23-0.31	(0.30-0.405)
Mud/Grading	all below	1000-1500	(39-59)	0.09-0.52	(0.12-0.68)

#### Mini Excavators

300.9D 301.7D 302.2D 302.7D CR 303.5E2 CR 305E2 CR 307E2  
 301.4C 301.7D CR 302.4D 303E CR 304E2 CR 305.5E2 CR 308E2 CR SB

# COMPACTION WHEELS



## Smooth operation in rough environments.

Cat Compaction Wheels provide a low cost option for trench compaction. The wheels feature tapered roller bearings and tampered foot design with static pad rollers, to allow for smooth operation and achieving a high level of compaction. Six to ten passes are usually adequate to achieve compaction in normal soil conditions, dependent on the required compaction levels.

### Specifications

Machine Models	Weight		Width		Number of Wheels	Total Number of Pads
	kg	(lbs)	mm	(in)		
301.4C, 301.7D, 301.7D CR	155-258	(342-569)	271-553	(11-22)	271-553	271-553
302.2D, 302.4D, 302.7D	161-264	(354-583)	271-553	(11-22)	271-553	271-553
303E2, 303.5E2 CR, 304E2 CR	162-266	(357-586)	271-553	(11-22)	271-553	271-553
305E2 CR, 305.5E2 CR	170-273	(374-601)	271-553	(11-22)	271-553	271-553
301.4C, 301.7D, 301.7D CR, 302.2D, 302.4D, 302.7D 303E2, 303.5E2 CR, 304E2 CR, 305E2 CR, 305.5E2 CR	177-282	(389-622)	271-553	(11-22)	271-553	271-553
307E2, 308E2 CR SB	415-882	(915-1945)	306-884	(11-35)	306-884	306-884

#### Mini Excavators

301.4C 301.7D CR 302.4D 303E2 304E2 CR 305.5E2 CR 308E2 CR SB  
 301.7D 302.2D 302.7D 303.5E2 CR 305E2 CR 307E2

# COUPLERS



## Move quickly from task to task.

Our Dual Lock™ Pin Grabber Couplers allow operators to change attachments in seconds, increasing job efficiency and enabling one machine to do multiple tasks. We offer two, easy-to-use options: hydraulic (controlled from the cab) and mechanical. And all Cat models include primary and secondary locking systems to ensure what you put on your machine, stays on.

### Specifications

Attachment Models	Machine Models	kg	(lb)
Mechanical Dual Lock™ Coupler	301.4C-308E2 CR SB	14-89	(32-195)
Hydraulic Dual Lock™ Coupler	303E CR, 308E2 CR SB	41-93	(90-205)
Hydraulic Dual Lock™ Tilt Coupler	305E2 CR-308E2 CR SB	112-198	(245-436)

Mini Excavators							
301.4C	301.7D CR	302.4D	303E CR	304E2 CR	305.5E2 CR	308E2 CR SB	
301.7D	302.2D	302.7D CR	303.5E2 CR	305E2 CR	307E2		

# FLAIL MOWERS



## High performance, down to a science.

Cat Flail Mowers are designed for high performance cutting of vegetation, saplings, and undergrowth from overgrown agricultural areas, retention ponds, and forested terrain. The hydraulic flail mowers reduce weeds, saplings, shrubs and small trees into mulched material, making them ideal for environmental maintenance applications, such as mowing along ditches, fence rows and retention ponds, controlling overgrowth, and cleaning up high banks and slopes.

### Specifications

Model	Machine Models	Overall Width		Working Width		Swinging Teeth Per Drum
		mm	(in)	mm	(in)	
HMF110	305E2 CR, 305.5E2 CR	1184	(47)	1000	(40)	16
HMF210	308E2 CR	1184	(47)	1000	(40)	16

\*Requires a drain kit and guarding on machine.

Mini Excavators	
305E2 CR	308E2 CR
305.5E2 CR	

# HAMMERS



**Separate the toughest surfaces.**

Our hammers were designed for hard hits, reducing rock and concrete materials. Each features an automatic shut-off and buffering system to reduce machine vibrations. And some of our hammers are fully enclosed to suppress noise.

## Specifications

Attachment Models	Machine Models	Operating Weight*		Impact Frequency	Tool Diameter	
		kg	(lb)		bpm	mm
H25D	300.9	70	(154)	1000-1900	36	(1.42)
H35E, H35Es	301.4C-302.4D	125-130	(276-287)	600-1800	40	(1.57)
H45E, H45Es	301.4C-302.7D CR	145-250	(320-551)	780-1800	50	(1.97)
H55E <sup>†</sup>	302.7D CR-305.5E2 CR	220-315	(485-695)	600-1680	58	(2.28)
H55E	302.7D CR-305.5E2 CR	250-340	(551-750)	600-1680	58	(2.28)
H55Es	302.7D CR-305.5E2 CR	260-345	(573-761)	600-1680	58	(2.28)
H65E <sup>†</sup>	303E CR-305.5E2 CR	260-355	(573-783)	720-1740	68	(2.68)
H65E	305E2 CR-308E2 CR SB	305-380	(673-838)	720-1740	68	(2.68)
H65Es	305E2 CR-308E2 CR SB	315-390	(695-860)	720-1740	68	(2.68)
H75Es	307E2-308E2 CR SB	480-500	(1058-1103)	840-1650	74.5	(2.93)
H95Es	307E2-308E2 CR SB	600-730	(1323-1610)	700-1260	87.5	(3.44)

\* Operating weight includes hammer, standard tool and mounting bracket.

<sup>†</sup> Pin-on model

### Mini Excavators

300.9D 301.7D 302.2D 302.7D CR 303.5E2 CR 305E2 CR 307E2  
301.4C 301.7D CR 302.4D 303E CR 304E2 CR 305.5E2 CR 308E2 CR SB

# MULCHERS



**Reclaim overgrown foliage.**

Cat Mulchers are designed for high performance cutting and mulching of vegetation, saplings, and undergrowth from overgrown agricultural areas and forested terrain. The hydraulic mulchers reduce saplings, shrubs and trees into mulched material, making it ideal for environmental maintenance, such as brush clearing and creating fire lanes. Other applications include: reclaiming untilled land, removing foliage from building construction sites and shredding pruned material and organic waste for biomass production.

## Specifications

Model	Machine Models	Overall Width		Working Width		Fixed Teeth Per Drum
		mm	(in)	mm	(in)	
HM208	308E2 CR	1026	(40)	818	(32)	15
HM210	308E2 CR	1026	(48)	1012	(40)	18

\*Requires a drain kit, electrical switch and guarding on machine.

### Mini Excavators

308E2 CR

# RIPPERS



## Tear up more terrain.

Built to cut through dense dirt, loosen rocky soil and break below the frost layer, Cat rippers are taking on some of the most challenging ground conditions. And because they're made for specific Cat models, they can better transfer machine power into ripping power.

### Specifications

Attachment Models (Shank Length)	Machine Models	Width		Height		Tip Radius		Weight	
		mm	(in)	mm	(in)	mm	(in)	kg	(lb)
490	303E CR, 304E2	232	(9.1)	660	(25.9)	650	(26)	45	(99)
676	305E2 CR, 305.5E2 CR	273	(10.7)	825	(32.4)	810	(32)	61	(134)
861	307E2, 308E2 CR SB	346	(13.6)	1074	(42.2)	1039	(41)	107	(235)

#### Mini Excavators

303E CR 304E2 CR 305.5E2 CR 308E2 CR SB  
303.5E2 CR 305E2 CR 307E2

# SHEARS



## Minimize metal.

Our shears rotate 360 degrees for rapid repositioning and are designed with a straight, lower jaw to improve the cutting force.

### Specifications

Attachment Model	Machine Models	Throat Force		Weight (boom-mount)	Jaw Opening		Jaw Depth		
		kN	(Sh Ton)		mm	(in)	mm	(in)	
S305	304E2 CR-308E2 CR SB	1812	(204)	608	(1,340)	240	(9.4)	290	(11.4)

#### Mini Excavators

304E2 CR 305.5E2 CR 308E2 CR SB  
305E2 CR 307E2

# THUMBS



## Go from digging to material handling.

Our thumbs work with buckets to grab, pick or sort material. They're hydraulically controlled from the cab, opening and closing around loads. And when you don't need it, the thumb can recline against the machine stick.

### Specifications

Machine Models	Thumb Style	Overall Width		Stored Height		For Use with Coupler	Number of Tines	Rotation
		mm	(in)	mm	(in)			
302.4D 302.7D CR	Hydraulic	373	(14.68)	271	(10.7)	Yes	2	126.6°
303E	Hydraulic	340	(13.4)	310	(12.2)	Yes	2	116.8°
303.5E2 CR	Hydraulic	399	(15.7)	307	(12.1)	Yes	2	116.8°
304E2 CR	Hydraulic	364	(14.0)	281	(11.0)	Yes	2	116.8°
305E2 CR	Hydraulic	386	(15.2)	272	(10.7)	Yes	2	131°
305.5E2 CR	Hydraulic	477	(18.8)	278	(11)	Yes	2	131°
307E2 308E2 CR SB	Hydraulic	458	(18.0)	466	(18.3)	No	2	133°
	Hydraulic	458	(18.0)	556	(21.9)	Yes	2	133°
	Stiff Link	458	(18.0)	466	(18.3)	No	2	81°
	Stiff Link	458	(18.0)	556	(21.9)	Yes	2	81°
	Pro Plus Series	458	(18.0)	526	(20.7)	No	2	181°
	Pro Plus Series	458	(18.0)	799	(31.5)	Yes	2	174°

#### Mini Excavators

302.4D 303E CR 304E2 CR 305.5E2 CR 308E2 CR SB  
302.7D CR 303.5E2 CR 305E2 CR 307E2

# VIBRATORY PLATE COMPACTORS



## Pack with power.

Cover more ground with our vibratory plate compactor's large surface and pack soil faster with its high-power pulses. We've even built in flexible isolators to guard against excessive vibrations.

### Specifications

Attachment Models	Machine Models	Impulse Force		Cycles	Base Plate Width	
		kN	(lbf)		mm	(in)
CVP16	302.7D CR-305.5E2 CR	16	(3650)	2200	305	(12)
CVP40	307E2, 308E2 CR SB	40	(8928)	2200	584	(23)

#### Mini Excavators

302.7D CR 303.5E2 CR 305E2 CR 307E2  
303E CR 304E2 CR 305.5E2 CR 308E2 CR SB

# GROUND ENGAGING TOOLS (GET)

Choosing the right GET is critical. Each is engineered to maximize machine performance in specific applications, reducing resistance while boring, digging or scraping. Our GET also protect heavy-wear areas, extending attachment life and lowering maintenance costs.

## AUGER BITS



### Standard Bit

- Factory standard
- For drilling holes with a large diameter

### Tree Bit

- Tapered tip
- For drilling holes with a large mouth and narrow base to properly fit a root ball or holes with a small diameter to fill with mulch or fertilizer

### Industrial Bit

- Excellent tooth retention while digging
- Allows for easy removal and installation

### Standard Rock Drill Head Bit

- Transforms a standard bit into an industrial bit
- For severe ground conditions including rock and various types of concrete
- Bolt-on design for easy removal when returning to normal conditions

Auger bit sizes range from 152 to 914 mm (6 to 36 in) in diameter to a depth of approximately 1270 mm (50 in). Stackable extensions range from 305 to 1829 mm (12 to 72 in) in length and are available to enable deeper drilling.



Diameter	Standard	Industrial	Rock Head Standard	Rock Head Bolt On	Tree Bit
6 inch	153-4083	372-0260	–	372-0230	–
9 inch	153-4084	372-0261	–	372-0231	–
12 inch	153-4085	372-0262	372-0232	–	–
15 inch	366-7752	–	–	372-0233	–
16 inch	–	372-0263	–	–	–
18 inch	153-4086	372-0264	372-0234*	–	–
24 inch	153-4089	372-0265*	372-0235*	–	153-4092
30 inch	217-3194*	–	–	–	–
36 inch	153-4091*	–	–	–	153-4095

\*Not compatible with A7B Auger Model



## BUCKET TEETH



### Wide

- Low penetration
- Low impact applications
- Use to smooth ground surfaces



### Extra Duty

- Moderate penetration
- Use in moderate impact applications
- More wear material



### General Duty

- Moderate penetration
- Moderate impact and abrasive conditions



### Penetration Plus

- Good penetration
- Moderate to high impact applications



### Penetration

- Very good penetration
- Moderate impact and lower abrasive conditions
- Less wear material



### Double Spike

- Very good penetration
- Use on fracturable materials
- Install in corner positions with spike centers



### Spike

- Excellent penetration
- Use on cohesive materials
- Less wear material



Description	J200	J225
Pin	8E-6208	6Y-3228
Retainer	8E-6209	8E-6259
Long	1U-3202	6Y-3222
Light Duty Long	195-9209	–
Short	–	6Y-6221
Wide	109-9200	186-3010
Penetration	1U-3209	6Y-8229
Sharp Corner	9W-8208	6Y-7228
Sharp Center	9W-8209	6Y-7229
Sharp Twin	135-8208	135-8228
Heavy Duty Long	–	8E-4222
Heavy Duty Abrasion	–	6Y-6223
Abrasion	4T-2203	–
Heavy Duty Pin	8E-6208	132-4762
Heavy Duty Retainer Assembly	8E-6209	149-5733

# QUICK REFERENCE

Find attachments made for your work.

	Augers	Buckets	Compaction Wheels	Couplers	Flail Mowers	Hammers	Mulchers	Rippers	Shears	Thumbs	Vibratory Plate Compactors
Agriculture	x	x	x	x	x	x	x			x	
Concrete Prep and Flatwork		x	x	x		x					x
Excavation and Earth Moving	x	x		x		x		x			
Finishing and Site Clean-Up		x	x	x	x	x	x			x	
Landscaping	x	x		x	x	x	x			x	
Material Handling		x		x		x					
Rental	x	x	x	x	x	x	x	x	x	x	x
Residential and Commercial Construction	x	x	x	x	x	x	x			x	x
Site Prep and Demolition		x		x		x		x	x	x	
Trenching and Utilities	x	x	x	x		x		x		x	x

Machine model availability and attachments vary by region. Please contact your local Cat dealer for availability.



# QUICK REFERENCE

Find attachments made for your machine.

Machine Models	Augers	Buckets					Compaction Wheel	Couplers		Flail Mower	Hydraulic Hammers	Mulchers	Rippers	Shears	Thumbs	Vibratory Plate Compactors
		Digging	Ditch Cleaning	Tilting Ditch Cleaning	Heavy Duty	Heavy Duty Capacity		Heavy Duty Rock	Dual Lock™							
300.9D		x	x								x					
301.4C	x	x	x	x			x				x					
301.7D, 301.7D CR	x	x	x	x			x				x					
302.2D, 302.4D	x	x	x	x			x				x				x	
302.7D CR	x	x	x	x			x				x				x	x
303E CR, 303.5E2 CR	x		x	x	x		x				x		x		x	x
304E2 CR	x		x	x	x		x				x		x	x	x	x
305.5E2 CR, 305E2 CR	x		x	x	x	x	x				x	x	x	x	x	x
307E2, 308E2 CR SB	x		x		x		x				x	x	x	x	x	x

Machine model availability and attachments vary by region. Please contact your local Cat dealer for availability.



# WORK WITHOUT WORRY.

We back our attachments with a one-year warranty and ongoing Cat dealer support. It's another way we're helping protect what you rely on.



# PARTS LIST

## AUGERS

Diameter	A7B		A14B	A19B	A26B
	Standard Stick	Long Stick			
301.4C 301.7D 301.7D CR	218-3205	218-3206	-	-	-
302.2D 302.4D 302.7D CR	218-3207		218-3197	-	-
303E CR 303.5E2 CR 304E2 CR	-	-	218-3198	220-7137	-
305E2 CR 305.5E2 CR	-	-	-	275-1000	275-1001
307E2 308E2 CR SB	-	-	-	-	313-1460

## AUGER EXTENSIONS

1 Foot (305mm)	2 Feet (610mm)	3 Feet (914mm)	6 Feet (1,829mm)
156-6328	217-3192	372-0256	372-0257

## AUGER ADAPTERS

Hex-to-Round	Round-to-Hex
156-6329	217-3191

## BUCKETS – DIGGING

Model	9" (229mm)	10" (254mm)	12" (305mm)	16" (406mm)	18" (457mm)	20" (508mm)	24" (610mm)	27" (686mm)	28" (457mm)
301.4C 301.7D 301.7D CR	147-1014	-	147-1018	147-1020	190-7387	147-1023	147-1026	-	-
302.2D 302.4D	-	396-9302	396-9303	396-9304	396-9305	396-9306	396-9307	-	396-9308
302.7D CR	-	176-7283	153-7851	153-7854	190-7390	153-7857	153-7860	190-7391	-

## BUCKETS – DITCH CLEANING

Model	STANDARD						
	28" (711mm)	32" (813mm)	40" (1,016mm)	47" (1,194mm)	48" (1,219mm)	51" (1,295mm)	54" (1,372mm)
300.9D	373-4458	-	-	-	-	-	-
301.4C 301.7D 301.7D CR	-	147-1029	147-1031	-	-	-	-
302.2D 302.4D 302.7D CR	-	153-7863	153-7865	153-7867	-	-	-
303E CR 303.5E2 CR 304E2 CR	-	-	279-4322	279-4323	-	-	-
305E2 CR 305.5E2 CR	-	-	279-4326	-	-	279-4327	-
307E2 308E2 CR SB	-	-	-	-	306-5664	-	306-5662

Model	STANDARD			TILTING		
	55" (1,397mm)	60" (1,524mm)	63" (1,600mm)	43" (1,092mm)	47" (1,194mm)	63" (1,600mm)
300.9D	-	-	-	-	-	-
301.4C 301.7D 301.7D CR	-	-	-	-	-	-
302.2D 302.4D 302.7D CR	-	-	-	246-0094	-	-
303E CR 303.5E2 CR 304E2 CR	282-9315	-	-	-	279-4325	-
305E2 CR 305.5E2 CR	-	-	279-4328	-	-	274-9022
307E2 308E2 CR SB	-	306-5660	-	-	-	-

# PARTS LIST (CONT)

## BUCKETS – HEAVY DUTY

Model	12" (305mm)	13" (330mm)	16" (406mm)	18" (457mm)	20" (508mm)	24" (610mm)	30" (762mm)	36" (914mm)
303E CR 303.5E2 CR 304E2 CR	464-9900	–	464-9901	464-9902	464-9903	464-9904	303-1329 464-9905	464-9906
305E2 CR 305.5E2 CR	464-9907	–	303-1311 464-9908	464-9909	303-1313 464-9910	464-9911	303-1315 464-9912	464-9913
302.7D CR 308E2 CR SB	–	305-6813	–	295-5951	–	295-5952 HD Rock 295-5970	295-5953 HD Rock 295-5971	295-5954

## BUCKETS – HEAVY DUTY CAPACITY

Model	12" (305mm)	16" (406mm)	18" (457mm)	20" (508mm)	24" (610mm)	30" (762mm)	36" (914mm)
303E CR 303.5E2 CR	303-1330 464-9914	464-9915	464-9916	464-9917	464-9918	464-9919	303-1336 464-9920

## BUCKETS – PIN-ON DIGGING

Model	10" (254mm)	14.6" (371mm)	Set of 10" (254mm), 14.6" (371mm) and 27.6" (701mm)
300.9D	373-4456	373-4457	373-4460

## BUCKETS – PIN LOCK GRABBER

Model	12" (305mm)		16" (406mm)		18" (457mm)	
	HEAVY DUTY	HIGH CAPACITY	HEAVY DUTY	HIGH CAPACITY	HEAVY DUTY	HIGH CAPACITY
307E2 308E2 CR SB	247-1947	247-1953	247-1948	247-1954	247-1949	247-1955

Model	24" (610mm)		30" (762mm)		36" (914mm)	
	HEAVY DUTY	HIGH CAPACITY	HEAVY DUTY	HIGH CAPACITY	HEAVY DUTY	HIGH CAPACITY
307E2 308E2 CR SB	247-1950	247-1956	247-1951	247-1957	247-1952	247-1958

## BUCKETS – MUD GRADING

Model	39" (991mm)	47" (1,194mm)	59" (1,499mm)
301.4C 301.7D 301.7D CR	388-9661	–	–
302.2D 302.4D 302.7D CR	388-9662	–	–
303E CR 303.5E2 CR 304E2 CR	–	–	–
305E2 CR 305.5E2 CR	–	388-9664	388-9665
307E2 308E2 CR SB	–	388-9666	388-9667

## QUICK COUPLERS

Model	Dual Lock Coupler		Dual Loack Tilt Coupler	Pin Lock Coupler	Pin Grabber Coupler	Hydraulic Lines	Pins
	Manual	Hydraulic	Hydraulic				
301.4C 301.7D 301.7D CR	361-1092	–	–	–	–	–	–
302.2D 302.4D 302.7D CR	361-1093	–	–	–	–	–	–
303E CR 303.5E2 CR 304E2 CR	444-7494	361-1095	–	–	–	373-2370, 384-5013	154-2638
305E2 CR 305.5E2 CR	444-7496	361-1097	455-6000	–	–	373-2375, 384-5015	282-2785
307E2 308E2 CR SB	444-7498	361-1099	455-6100	485-0314	311-0509	373-4405	308-0324

# PARTS LIST (CONT)

## HAMMER UNIT

Model	H25D	H35E	H35Es	H45E	H45Es	H55E Pin On	H55E
300.9D	372-1528	-	-	-	-	-	-
301.4C	-	437-5743	417-9011	-	-	-	-
301.7D	-	437-5743	417-9011	-	-	-	-
301.7D CR	-	-	-	437-5729	417-8977	-	-
302.2D	-	437-5743	417-9011	437-5729	417-8977	-	-
302.4D	-	437-5743	417-9011	437-5729	417-8977	-	-
302.7D CR	-	-	-	437-5729	417-8977	437-5717	437-5185
303E CR	-	-	-	-	-	-	-
303.5E2 CR	-	-	-	-	-	437-5717	437-5185
304E2 CR	-	-	-	-	-	437-5717	437-5185
305E2 CR	-	-	-	-	-	437-5717	437-5185
305.5E2 CR	-	-	-	-	-	437-5717	437-5185
307E2	-	-	-	-	-	-	-
308E2 CR SB	-	-	-	-	-	-	-

H55Es	H65E Pin On	H65E	H65Es	H80E	H80Es	H95Es
-	-	-	-	-	-	-
-	-	-	-	-	-	-
-	-	-	-	-	-	-
-	-	-	-	-	-	-
-	-	-	-	-	-	-
-	-	-	-	-	-	-
417-8948	-	-	-	-	-	-
-	-	-	-	-	-	-
417-8948	438-3419	-	-	-	-	-
417-8948	438-3419	-	-	-	-	-
417-8948	438-3419	435-5318	415-1112	-	-	-
417-8948	438-3419	435-5318	415-1112	-	-	-
-	-	435-5318	415-1112	465-5624	457-0158	369-0786
-	-	435-5318	415-1112	465-5624	457-0158	369-0786

\*You will need to purchas addition parts for each model  
(mounting bracket, tool, connecting lines)

# PARTS LIST (CONT)

## RIPPERS

Model	Ripper	Model	Scrap Shear	Mounting Brackets	Connector Lines
303E CR 303.5E2 CR 304E2 CR	453-8570	303E CR 303.5E2 CR 304E2 CR	171-5495	370-2182	231-7108
305E2 CR 305.5E2 CR	453-8571	305E2 CR 305.5E2 CR	171-5495	283-4187, 449-9083	231-7108
307E2 308E2 CR SB	453-8572	307E2 308E2 CR SB	171-5495	318-4863	359-9831

## SHEARS

## THUMBS

Model	Hydraulic	Stiff Link
303E CR 303.5E2 CR 304E2 CR	451-6380	–
303E CR 303.5E2 CR 304E2 CR	452-2740	–
305E2 CR 305.5E2 CR	452-9816	–
307E2 308E2 CR SB	305-6740, 305-6741, 305-6744, 305-6745	305-6742, 305-6743

## VIBRATORY PLATE COMPACTOR

Model	Compactor Plate		Backfill Blade	Swivel		Mounting Bracket	Connecting Len		
	CVP16	CVP40		CVP16	CVP40				
303E CR 303.5E2 CR 304E2 CR	222-3780	–	222-6443	265-7461	–	438-7184	203-0998		
303E CR 303.5E2 CR 304E2 CR	222-3780	–	222-6443	265-7461	–	437-3584	203-0977	203-0981	203-0983
305E2 CR 305.5E2 CR	222-3780	–	222-6443	265-7461	–	437-8462	203-0983		
307E2 308E2 CR SB	–	205-5900	211-8200	–	264-5907	394-2330	325-3832		

