

# SNOW AND ICE ATTACHMENTS

**CONVERT CAT® MACHINE POWER INTO CLEARING POWER**

Cat Skid Steer Loaders, Multi Terrain Loaders, Compact Track Loaders,  
Compact Wheel Loaders, Backhoe Loaders and Small Wheel Loaders

**For more information,  
visit [Cat.com/attachments](http://Cat.com/attachments)  
or contact your local  
Cat dealer.**



**BUILT FOR IT.™**

AEXQ1704-03 July 2017

© 2017 Caterpillar. All Rights Reserved. CAT, CATERPILLAR, BUILT FOR IT, their respective logos, "Caterpillar Yellow," the "Power Edge" trade dress, as well as corporate and product identity used herein, are trademarks of Caterpillar and may not be used without permission.

**BUILT FOR IT.™**



# NEVER LET WEATHER SLOW YOU DOWN.

Equip your machine for any condition.



If it were easy to remove snow and ice, we wouldn't make tools for it. We've built attachments to help you tackle only the toughest winter weather. Our straight and sectional pushes, brooms, buckets, plows and snow blowers ensure you can work quickly and with greater safety.



# ANGLE BROOMS

Our angle brooms are designed to carefully remove snow — brushing surfaces rather than scraping. Select from hydraulic and manual angling models.



## Specifications

| Attachment Models       | Compatibility      | Sweeping Width   | Weight kg (lb) | Coupler Interface |
|-------------------------|--------------------|------------------|----------------|-------------------|
| BA118C, Manual Angle    | SSL, CTL, MTL, CWL | 2119 mm (83 in)  | 410 (905)      | SSL               |
| BA118C, Hydraulic Angle | SSL, CTL, MTL, CWL | 2119 mm (83 in)  | 433 (955)      | SSL               |
| BA22                    | CWL                | 2200 mm (87 in)  | 386 (851)      | SSL               |
| BA25                    | BHL, CWL, SWL      | 2500 mm (98 in)  | 460 (1014)     | IT/Fusion™        |
| BA30                    | SWL                | 2997 mm (118 in) | 499 (1100)     | Fusion™           |

BHL: Backhoe Loader      CWL: Compact Wheel Loader      SSL: Skid Steer Loader  
 CTL: Compact Track Loader      MTL: Multi Terrain Loader      SWL: Small Wheel Loader

### IMPROVED PROTECTION

Hood helps direct snow and debris away from the machine.

### SUPERIOR SUSPENSION

Unique suspension system eliminates the need for support wheels and ensures the bristles maintain a constant ground pressure.

### MORE MOTION

Our brooms can sweep straight or rotate 30 degrees to the left or right.



### GREATER DURABILITY

Bristles are a combination of polypropylene and wire for greater durability and an extended broom life.

### SIMPLE STORAGE

Four heavy-duty skid-type stands make it easy to store the broom apart from the machine without damaging the bristles.

Certain models within the family of machines listed may not be compatible with the attachment. Please consult your Cat dealer for further information.

# LIGHT MATERIAL BUCKETS

Our light material bucket capacities range from 0.9 to 6.5 cubic yards and are best at removing snow from roadways, parking lots and walking paths. Use them year-round to handle low-density materials such as mulch, wood chips, dry topsoil, fertilizer and feed.

## Specifications

| Attachment Models | Compatibility | Capacity       |                    | Weight |        | Coupler Interface |
|-------------------|---------------|----------------|--------------------|--------|--------|-------------------|
|                   |               | m <sup>3</sup> | (yd <sup>3</sup> ) | kg     | (lb)   |                   |
| 1829 mm (72 in)   | SSL, CTL, MTL | 0.68           | (0.90)             | 254    | (560)  | SSL               |
| 1981 mm (78 in)   | SSL, CTL, MTL | 0.75           | (0.98)             | 295    | (654)  | SSL               |
| 2134 mm (84 in)   | SSL, CTL, MTL | 0.84           | (1.1)              | 323    | (712)  | SSL               |
| 2438 mm (96 in)   | SSL, CTL, MTL | 0.93           | (1.22)             | 366    | (808)  | SSL               |
| 1770 mm (70 in)   | CWL           | 0.99           | (1.3)              | 425    | (937)  | SSL               |
| 1940 mm (76 in)   | CWL           | 1.22           | (1.6)              | 475    | (1047) | SSL               |
| 2050 mm (81 in)   | CWL           | 1.52           | (2.0)              | 519    | (1144) | SSL               |
| 2750 mm (108 in)  | SWL           | 3.05           | (4.0)              | 1220   | (2689) | Fusion™           |
| 2750 mm (108 in)  | SWL           | 3.44           | (4.5)              | 1303   | (2873) | Fusion™           |
| 2750 mm (108 in)  | SWL           | 3.82           | (5.0)              | 1367   | (3015) | Fusion™           |
| 2750 mm (108 in)  | SWL           | 4.20           | (5.5)              | 1439   | (3172) | Fusion™           |
| 2750 mm (108 in)  | SWL           | 4.97           | (6.5)              | 1502   | (3311) | Fusion™           |
| 2750 mm (108 in)  | SWL           | 3.05           | (4.0)              | 1238   | (2730) | Pin On            |
| 2750 mm (108 in)  | SWL           | 3.44           | (4.5)              | 1317   | (2904) | Pin On            |
| 2750 mm (108 in)  | SWL           | 3.82           | (5.0)              | 1389   | (3062) | Pin On            |
| 2750 mm (108 in)  | SWL           | 4.20           | (5.5)              | 1440   | (3175) | Pin On            |
| 2750 mm (108 in)  | SWL           | 4.97           | (6.5)              | 1497   | (3300) | Pin On            |
| 2750 mm (108 in)  | SWL           | 3.44           | (4.5)              | 1312   | (2893) | Pin On            |
| 2750 mm (108 in)  | SWL           | 3.82           | (5.0)              | 1371   | (3023) | Pin On            |
| 2750 mm (108 in)  | SWL           | 4.20           | (5.5)              | 1438   | (3170) | Pin On            |
| 2750 mm (108 in)  | SWL           | 4.97           | (6.5)              | 1496   | (3298) | Pin On            |

CTL: Compact Track Loader    MTL: Multi Terrain Loader    SWL: Small Wheel Loader  
 CWL: Compact Wheel Loader    SSL: Skid Steer Loader

## IMPROVED DESIGN

Bucket shape and strike plane angle are engineered for consistent load sizes and greater material retention.



## LONG-LASTING EDGES

Bolt-on cutting edge is reversible and replaceable, ensuring complete contact with the ground for maximum snow removal.

## GREATER DURABILITY

Torque tube increases rigidity for wet, heavy loads of snow.



## INTEGRATED STEP

Built-in step makes it easier to safely enter and exit the machine. Metal grating helps improve grip in wet weather. On Skid Steer Loader models only.

Certain models within the family of machines listed may not be compatible with the attachment. Please consult your Cat dealer for further information.

# MATERIAL HANDLING BUCKETS

Capable of carrying up to 1.7 cubic yards of material at a time, our buckets are ideal for removing snow from roadways, parking lots and walking paths. Choose to use them year-round in light-material, high-capacity applications.



## Specifications

| Attachment Models | Compatibility      | Capacity       |                    | Weight |       |
|-------------------|--------------------|----------------|--------------------|--------|-------|
|                   |                    | m <sup>3</sup> | (yd <sup>3</sup> ) | kg     | (lb)  |
| 2134 mm (84 in)   | SSL, CTL, MTL, CWL | 1.07           | (1.40)             | 371    | (818) |
| 2438 mm (96 in)   | SSL, CTL, MTL, CWL | 1.24           | (1.63)             | 408    | (900) |
| 2591 mm (102 in)  | SSL, CTL, MTL, CWL | 1.33           | (1.74)             | 426    | (939) |

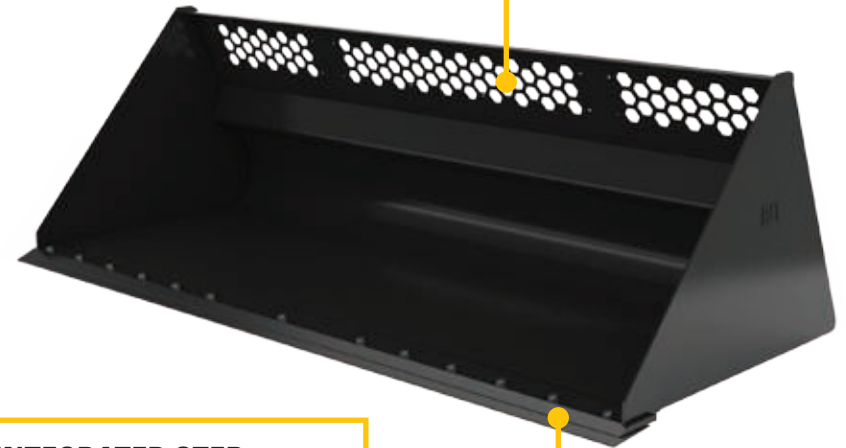
CTL: Compact Track Loader    MTL: Multi Terrain Loader  
 CWL: Compact Wheel Loader    SSL: Skid Steer Loader

### GREATER DURABILITY

Torque tube increases rigidity for wet, heavy loads of snow.

### BETTER VIEW

Honeycomb holes give operators a great view of snow in the bucket for maximum capacity scoops.



### INTEGRATED STEP

Built-in step makes it easier to safely enter and exit the machine. Metal grating helps improve grip in wet weather.

### LONG-LASTING EDGES

Bolt-on cutting edge is reversible and replaceable, ensuring complete contact with the ground for maximum snow removal.

Certain models within the family of machines listed may not be compatible with the attachment. Please consult your Cat dealer for further information.

# SECTIONAL SNOW PUSHES

Remove snow from uneven surfaces – in a single pass. Our sectional snow pushes save time and reduce the amount of salt needed. They're ideal for parking lots, driveways, airport runways and storage lots. Our snow push options range from 8 to 16 feet in length. Section numbers vary based on the width.



## Specifications

| Attachment Models             | Compatibility      | Moldboard Sections | Weight kg | (lb)   | Coupler Interface |
|-------------------------------|--------------------|--------------------|-----------|--------|-------------------|
| 2.4 m (8 ft) Standard Duty    | SSL, CTL, MTL      | 3                  | 635       | (1400) | SSL               |
| 3 m (10 ft) Standard Duty     | SSL, CTL, MTL      | 4                  | 771       | (1700) | SSL               |
| 3.6 m (12 ft) Standard Duty   | SSL, CTL, MTL, CWL | 5                  | 907       | (2000) | SSL               |
| 3.6 m (12 ft) Industrial Duty | SWL                | 4                  | 1548      | (3413) | Fusion™           |
| 4.2 m (14 ft) Industrial Duty | SWL                | 5                  | 1729      | (3813) | Fusion™           |
| 4.8 m (16 ft) Industrial Duty | SWL                | 6                  | 1911      | (4213) | Fusion™           |

CTL: Compact Track Loader    MTL: Multi Terrain Loader    SWL: Small Wheel Loader  
 CWL: Compact Wheel Loader    SSL: Skid Steer Loader

### SMART SECTIONS

Sections maximize the number of cutting edges in contact with the ground when passing over obstacles or uneven surfaces.

### FLEX FEATURE

Springs and a tension block allow the trip cutting edge to move up to 45 degrees while scraping ground surfaces.

### SELF-LEVELING SYSTEM

Keeps the side skids in constant contact with ground surfaces for the most thorough snow removal.



### LONG-LASTING EDGES

Steel cutting edges remove hard-packed snow. All sections include a bolted-on, reversible and replaceable blade for easy maintenance.

### LARGE SKID SHOES

Skid shoes tilt to ride over obstructions, helping protect against attachment wear.

### OPTIMIZED MOLDBOARD

Narrow enough to clear snow out of dips in the pavement.

### EASY INDICATORS

Triangular holes warn operators if the float system is overloaded.

Certain models within the family of machines listed may not be compatible with the attachment. Please consult your Cat dealer for further information.



# SNOW PLOWS

Scrape snow and ice from ground surfaces, deflecting it directly ahead or to the side. Our snow plow widths range from 6 to 14 feet.



## Specifications

| Attachment Models  | Compatibility      | Weight |        | Coupler Interface |
|--------------------|--------------------|--------|--------|-------------------|
|                    |                    | kg     | (lb)   |                   |
| 1.8 m (6 ft) Plow  | SSL, CTL, MTL, CWL | 155    | (341)  | SSL               |
| 2.1 m (7 ft) Plow  | SSL, CTL, MTL, CWL | 185    | (409)  | SSL               |
| 2.4 m (8 ft) Plow  | SSL, CTL, MTL, CWL | 196    | (432)  | SSL               |
| 2.7 m (9 ft) Plow  | SSL, CTL, MTL, CWL | 206    | (455)  | SSL               |
| 3 m (10 ft) Plow   | SSL, CTL, MTL, CWL | 216    | (477)  | SSL               |
| 2.7 m (9 ft) Plow  | CWL                | 340    | (750)  | IT                |
| 3 m (10 ft) Plow   | CWL                | 397    | (875)  | IT                |
| 3.6 m (12 ft) Plow | CWL                | 423    | (932)  | IT                |
| 2.7 m (9 ft) Plow  | BHL                | 340    | (750)  | IT                |
| 3 m (10 ft) Plow   | BHL                | 397    | (875)  | IT                |
| 3.6 m (12 ft) Plow | BHL                | 423    | (932)  | IT                |
| 3 m (10 ft) Plow   | SWL                | 439    | (968)  | Fusion™           |
| 3.6 m (12 ft) Plow | SWL                | 496    | (1093) | Fusion™           |
| 4.2 m (14 ft) Plow | SWL                | 561    | (1236) | Fusion™           |

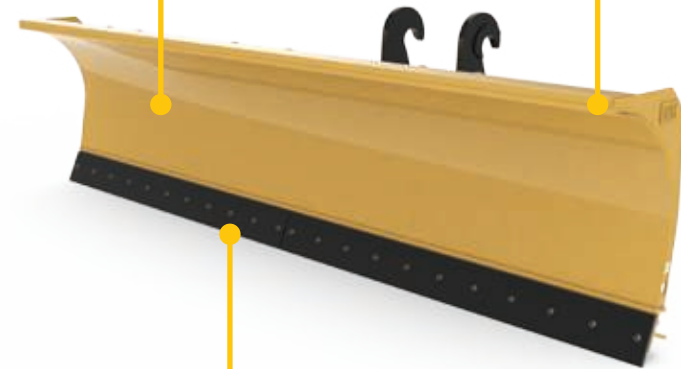
BHL: Backhoe Loader      CWL: Compact Wheel Loader      SSL: Skid Steer Loader  
 CTL: Compact Track Loader      MTL: Multi Terrain Loader      SWL: Small Wheel Loader

### SUPERIOR WALLS

Smooth-wall design and reinforcements allow you to push heavier loads.

### OPTIMIZED MOLDBOARD

Curved moldboard rolls snow for easier pushing.



### LONG-LASTING EDGES

Bolt-on cutting edges are reversible and replaceable ensuring complete contact with the ground for maximum snow removal. Choose from steel or rubber.

### AUTOMATIC ADJUSTMENTS

Spring-loaded trip edge offers up to 7 inches of ground clearance.

Certain models within the family of machines listed may not be compatible with the attachment. Please consult your Cat dealer for further information.

# SNOW BLOWERS

Gather and throw snow with accuracy. Our snow blowers are best for clearing streets, parking lots, driveways and sidewalks.



## Specifications

| Attachment Models | Compatibility      | Intake Width |      | Throw Distance |      |
|-------------------|--------------------|--------------|------|----------------|------|
|                   |                    | mm           | (in) | m              | (ft) |
| SR117             | SSL, CTL, MTL, CWL | 1702         | (67) | 9.1            | (30) |
| SR118             | SSL, CTL, MTL, CWL | 1854         | (73) | 12.2           | (40) |
| SR121             | SSL, CTL, MTL, CWL | 2159         | (85) | 12.2           | (40) |
| SR318             | SSL, CTL, MTL, CWL | 1854         | (73) | 13.7           | (45) |
| SR321             | SSL, CTL, MTL, CWL | 2159         | (85) | 13.7           | (45) |

CTL: Compact Track Loader    MTL: Multi Terrain Loader  
CWL: Compact Wheel Loader    SSL: Skid Steer Loader

### SMARTER IMPELLER

In-line design draws up only as much snow as it can throw. Fine-tune the impeller to move light snow or wet and heavy snow.

### EASY ADJUSTMENTS

Auger, impeller, chute and deflector are all hydraulically controlled for a hands-off operation.

### TWO-STAGE DESIGN

Both an auger and impeller are used to move more snow, more efficiently. A reverse feature allows you to expel obstructions without ever leaving the cab.

### ADVANCED CHUTE

Rotating 180 degrees, it can direct snow forward or to either side of the machine. A smooth, non-metallic liner prevents plugging and freeze-ups and the deep design makes for a more controllable stream of snow.

### PROTECTED CHAIN

Nickel-plated chute chain prevents chain rust, prolonging chain life and performance.

### SIMPLE CONNECTIONS

Plug-n-play design means your machine joystick can control the snow blower's chute and deflector without extra wires or hardware.

### LONG-LASTING EDGES

Steel cutting edge removes hard-packed snow. Its bolt-on, reversible and replaceable design makes maintenance easy.

### LARGE SKID SHOES

Skid shoes guard against wear across rough surfaces helping extend attachment life.



Certain models within the family of machines listed may not be compatible with the attachment. Please consult your Cat dealer for further information.



# STRAIGHT SNOW PUSHES

Remove snow in a single pass. Our straight snow pushes save time and reduce the amount of salt needed. They're ideal for parking lots, driveways, airport runways and storage lots. Lengths range from 8 to 12 feet.



## Specifications

| Attachment Models              | Compatibility      | Weight |       | Coupler Interface |
|--------------------------------|--------------------|--------|-------|-------------------|
|                                |                    | kg     | (lb)  |                   |
| 2.4 m (8 ft) Push Rubber Edge  | SSL, CTL, MTL, CWL | 353    | (778) | SSL               |
| 3 m (10 ft) Push Rubber Edge   | SSL, CTL, MTL, CWL | 393    | (866) | SSL               |
| 3.6 m (12 ft) Push Rubber Edge | SSL, CTL, MTL, CWL | 432    | (952) | SSL               |

CTL: Compact Track Loader    MTL: Multi Terrain Loader  
 CWL: Compact Wheel Loader    SSL: Skid Steer Loader

### OPTIMIZED MOLDBOARD

Curved moldboard rolls snow for easier pushing.



### LONG-LASTING EDGES

Cutting edges remove hard-packed snow. All are bolted on with reversible and replaceable blade for easy maintenance. Choose from steel or rubber.

### LARGE SKID SHOES

Skid shoes are adjustable and bolt on for trip edge height preference and easy maintenance.

Certain models within the family of machines listed may not be compatible with the attachment. Please consult your Cat dealer for further information.

# STRAIGHT SNOW PUSHES WITH TRIP EDGE

Remove snow in a single pass. Our straight snow pushes save time and reduce the amount of salt needed. They're ideal for parking lots, driveways, airport runways and storage lots. Lengths range from 8 to 16 feet.



## Specifications

| Attachment Models              | Compatibility      | Weight<br>kg | (lb)   | Coupler<br>Interface |
|--------------------------------|--------------------|--------------|--------|----------------------|
| 2.4 m (8 ft) Push Rubber Edge  | SSL, CTL, MTL, CWL | 176          | (389)  | SSL                  |
| 3 m (10 ft) Push Rubber Edge   | SSL, CTL, MTL, CWL | 197          | (434)  | SSL                  |
| 3.6 m (12 ft) Push Rubber Edge | SSL, CTL, MTL, CWL | 216          | (477)  | SSL                  |
| 2.4 m (8 ft) Push Steel Edge   | SSL, CTL, MTL, CWL | 176          | (389)  | SSL                  |
| 3 m (10 ft) Push Steel Edge    | SSL, CTL, MTL, CWL | 197          | (434)  | SSL                  |
| 3.6 m (12 ft) Push Steel Edge  | SSL, CTL, MTL, CWL | 216          | (477)  | SSL                  |
| 3 m (10 ft) Push               | BHL, CWL, SWL      | 371          | (818)  | IT                   |
| 3.6 m (12 ft) Push             | BHL, CWL, SWL      | 428          | (943)  | IT                   |
| 3.6 m (12 ft) Push             | SWL                | 598          | (1318) | Fusion™              |
| 4.2 m (14 ft) Push             | SWL                | 653          | (1439) | Fusion™              |
| 4.8 m (16 ft) Push             | SWL                | 701          | (1546) | Fusion™              |

BHL: Backhoe Loader      CWL: Compact Wheel Loader      SSL: Skid Steer Loader  
 CTL: Compact Track Loader      MTL: Multi Terrain Loader      SWL: Small Wheel Loader

### OPTIMIZED MOLDBOARD

Curved moldboard rolls snow for easier pushing.

### AUTOMATIC ADJUSTMENTS

Spring-loaded trip edge offers up to 7 inches of ground clearance.



### LONG-LASTING EDGES

Cutting edges remove hard-packed snow. All are bolted on with reversible and replaceable blade for easy maintenance. Choose from steel or rubber.

### LARGE SKID SHOES

Skid shoes are adjustable and bolt on for trip edge height preference and easy maintenance.

Certain models within the family of machines listed may not be compatible with the attachment. Please consult your Cat dealer for further information.

# COMPATIBILITY

|  |  |  |  |
|--|--|--|--|
|  <p>MATERIAL HANDLING BUCKETS</p> |  <p>SNOW BLOWERS</p>  |  <p>STRAIGHT SNOW PUSHES</p>                      |  <p>Skid Steer Loaders,<br/>Compact Track Loaders,<br/>Multi Terrain Loaders</p>  <p>Compact Wheel Loaders</p>   |
|  <p>LIGHT MATERIAL BUCKETS</p>   |  <p>LIGHT MATERIAL BUCKETS</p>   |  <p>LIGHT MATERIAL BUCKETS</p>                   |  <p>Skid Steer Loaders,<br/>Compact Track Loaders,<br/>Multi Terrain Loaders</p>  <p>Compact Wheel Loaders</p>  <p>Small Wheel Loaders</p>   |
|  <p>SECTIONAL SNOW PUSHES</p>   |  <p>SNOW PLOWS</p>  |  <p>STRAIGHT SNOW PUSHES<br/>WITH TRIP EDGE</p> |  <p>Skid Steer Loaders,<br/>Compact Track Loaders,<br/>Multi Terrain Loaders</p>  <p>Compact Wheel Loaders</p>  <p>Backhoe Loaders</p>  <p>Small Wheel Loaders</p> |
|  <p>ANGLE BROOMS*</p>             |  <p>Skid Steer Loaders,<br/>Compact Track Loaders,<br/>Multi Terrain Loaders</p>  <p>Compact Wheel Loaders</p>  <p>Backhoe Loaders</p>  <p>Small Wheel Loaders</p> |  |  |

\* Angle Broom shown with optional water kit.



